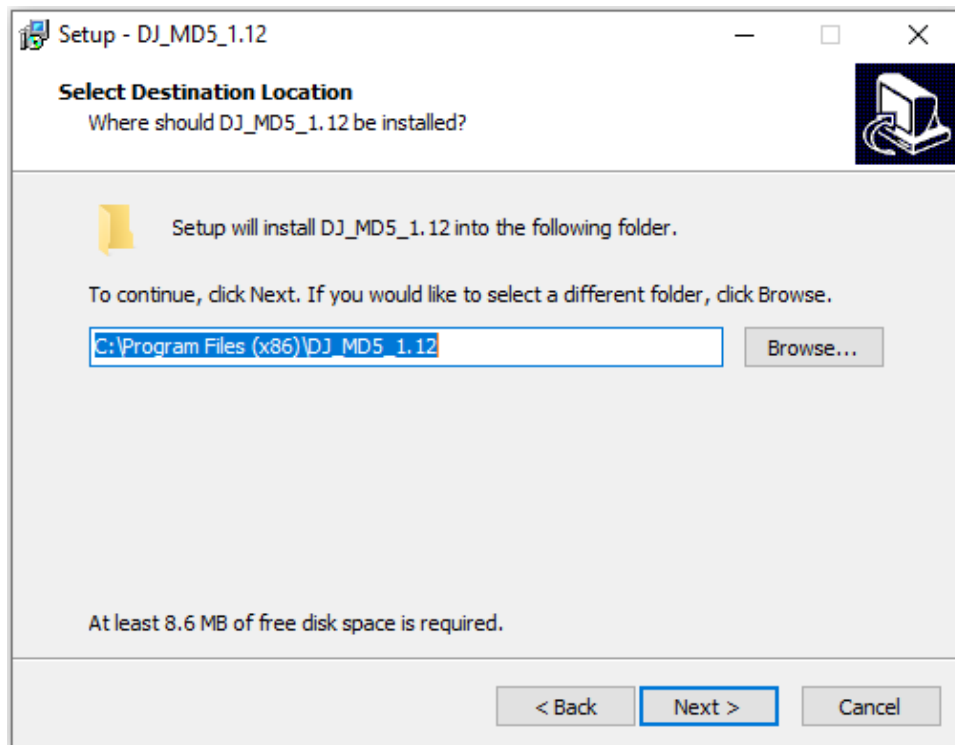


ALINCO DJ-MD5T Series Firmware Update Instructions.

Please download the latest CPS Utility v1.12 and FW v1.13c below

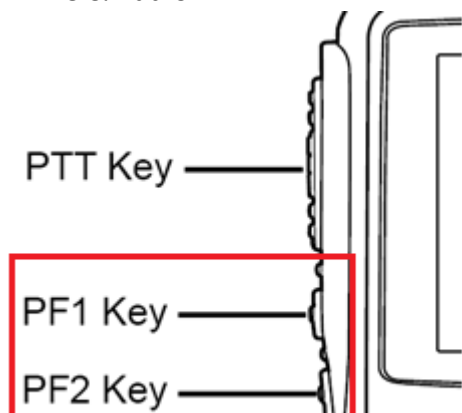
https://www.remtronix.com/downloads/DJ-MD5T_CPSv1.12_FWv1.13c.zip

1. Uninstall previously installed CPE Utility 1.xx.
2. Unzip and Install latest CPS 1.12 Utility/FW. By Default, the Installation set for "Drive C". Make changes to reflect the Drive you and to install this Utility to. Most cases should be "C:/Program Files (x86)\DJ_MD5_1.12"

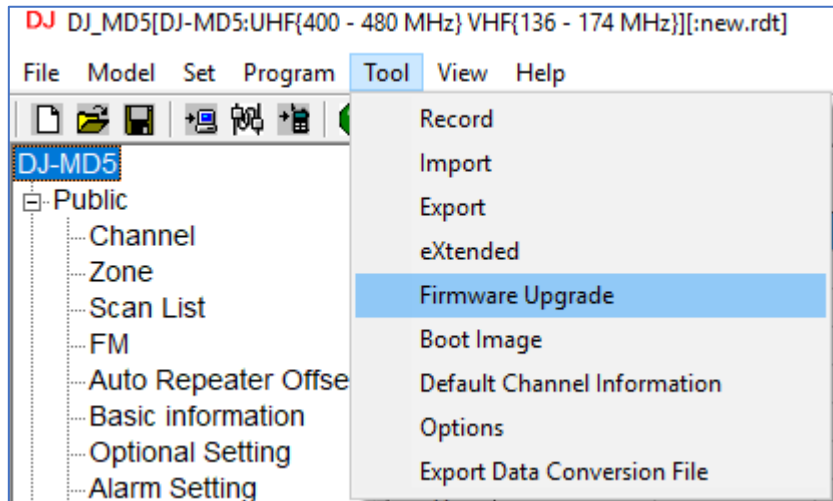


3. "RUN" the DJ_MD5_1.12 CPS Utility in windows under "Administrator" mode.

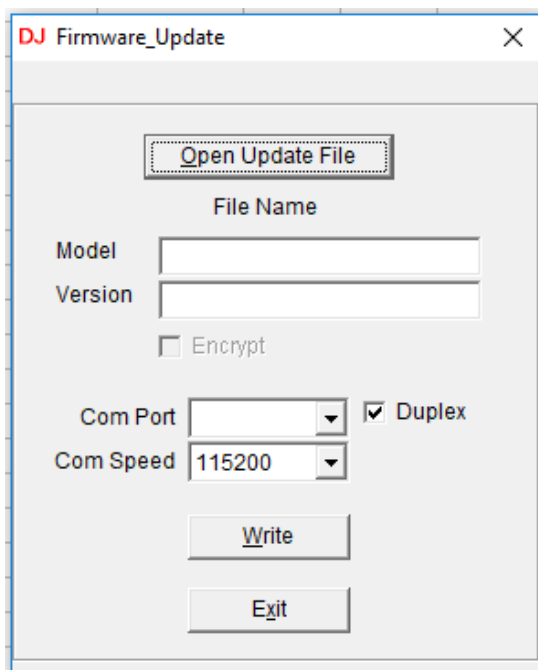
- Turn ON the Unit with PF1 + PF2 Buttons Pressed. You will see a "RED" Flashing LED upper right top corner of the screen indicating your Unit is now on Firmware Update Mode. Plug in the USB Cable to PC & Radio



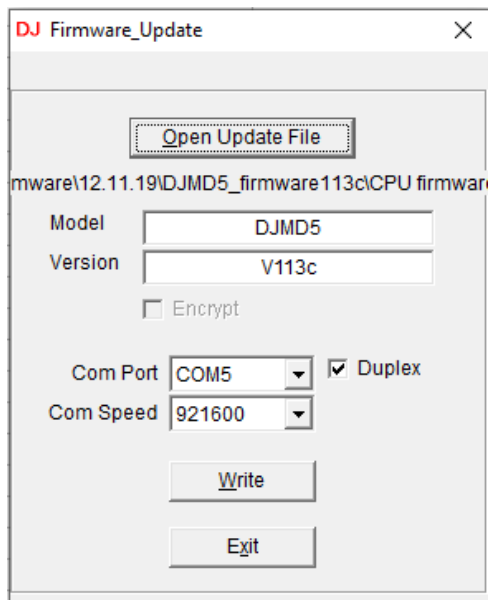
4. Open up the CPS Utility and Select "Tools" from the Top Menu and select "Firmware"



5. Locate the Firmware Data and select the "DJ-MD5-COM_V1.13c_20191213 spi" file data.



6. Choose the appropriate COM Port and lower the COM Speed to 115200



7. Select option "Duplex" and write the FW to your unit.
8. If all goes well, you should be able to FLASH with latest Firmware successful.
Unit will Initialize and return to original screen display status.

9. If you encounter and ERROR Message "Run-Time error '5'" You will need to run the CPE/Clone Utility in "Administrator" mode.
 - To Run the CPS Utility in Administrator mode (Place the Mouse curser on "DJ_MD5_1.12" icon and Right click the Mouse button)
 - Select "Properties" and click on "Compatibility"
 - Check on "Run this program as an Administrator"

